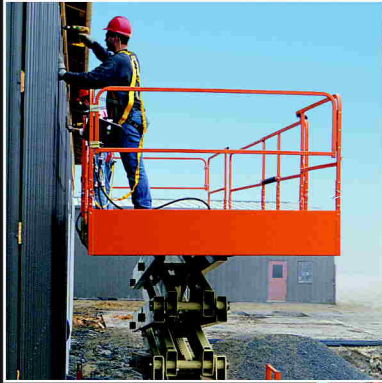


# 500 RTS

## ROUGH TERRAIN SCISSOR LIFTS



**MegaDeck™** Optional Deck Extension Improves Operator Reach for Greater Productivity



**Unmatched Rough Terrain Performance**



**Independently Controlled Leveling Jacks for Enhanced Performance**



[www.jlg.com](http://www.jlg.com)





## 500RTS

### Dimensional Data

A. Platform Height—Elevated	50 ft. (15.24 m)
Platform Height—Lowered	6 ft. 8 in. (2.03 m)
B. Platform Railing Height	3 ft. 7.5 in. (1.1 m)
C. Overall Height—with Rails Lowered	8 ft. 0.5 in. (2.45 m)
D. Platform Dimensions	71 in. x 168 in. (1.8 x 4.27 m)
Platform Extension	4 ft. (1.22 m)
E. Overall Length	15 ft. 5 in. (4.7 m)
F. Overall Width	90 in. (2.29 m)
G. Wheelbase	10 ft. 2 in. (3.1 m)
Ground Clearance	12 in. (30 cm)
Tire Size	33 x 12 Loader Lug

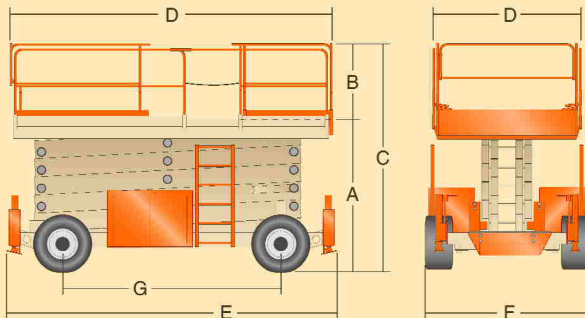
### Performance Data

Platform Capacity	2,500 lb. (1,134 kg)
Capacity w/Dual Extensions	2,000 lb. (907 kg)
Lift/Lower Time	72/72 sec.
Maximum Drive Height	22 ft. (6.71 m)
Gross Vehicle Weight w/One Extension*	17,200 lb. (7,802 kg)
Drive Speed—2WD/4WD	3.5 mph (5.6 kph)/2.8 mph (4.5 kph)
Gradeability—2WD/4WD	35%/45%
Turning Radius 2WS (Inside)	20 ft. 2 in. (6.15 m)
Turning Radius 2WS (Outside)	27 ft. 8 in. (8.43 m)
Turning Radius 4WS (Inside)	6 ft. 6 in. (1.98 m)
Turning Radius 4WS (Outside)	12 ft. 1 in. (3.68 m)

### Power System

Brakes	Spring Applied Multi-Disc
Dual Fuel Engine (Water-Cooled)	Ford LRG-425 70 hp (52 kW)
Diesel Engine (Air-Cooled)	Deutz F3L-1011 42 hp (36 kW)
Fuel Tank Capacity	15 gal. (56.8 L)
Hydraulic Reservoir	37 gal. (140 L)

\*Certain options or country standards increase weight. Specifications may change to meet country standards or with addition of optional equipment.



### The JLG "1 & 5" Warranty

JLG Industries, Inc. backs its products with its exclusive "1 & 5" Warranty. We provide coverage on all products for one (1) full year, and cover all specified major structural components for five (5) years. Due to continuous product improvements, we reserve the right to make specification and/or equipment changes without prior notification. This machine meets or exceeds applicable OSHA Regulations in 29 CFR 1910.67, 29 CFR 1926.453, ANSI A92.6-1999, and CSA Standard CSA B354.2-01, as originally manufactured for intended applications.

### Standard Features

- 71 x 168 in. (1.8 x 4.7 m) Steel Platform
- Oscillating Axle
- 4 ft. (1.22 m) Powered Deck Extension
- 110V-AC Receptacle In Platform
- 12 x 16.5 Loader Lug Tires
- Moveable, Removable Platform Console Box
- Fold-Down Handrails
- Proportional Hydrostatic Drive Control with Thumb Steer
- Horn
- Scissor Maintenance Prop
- Manual Descent Hand Pump
- Descent Alarm
- Heavy Gauge Steel Chassis Compartment Hoods
- Ground Control Console with Hourmeter, Water Temperature Gauge, Oil Pressure Gauge, and Voltmeter
- Hydraulic Leveling Jacks (Independently Controlled from Platform Control Console)
- 3 Degree Tilt Alarm and Light
- Tie Down Lugs

### Options

Platform Worklights	All Motion Alarm
1/2 in. Airline to Platform	Flashing Beacon
Four Wheel Steer	33.5 lb. Propane Tank
31 x 15.5 Foam-Filled Tires	43.5 lb. Propane Tank
31 x 15.5 High Float Tires	Engine Block Heater (Ford Only)
12 x 16.5 Foam-Filled Tires	Spark Arrestor Muffler (Ford Only)
Tow Package	Pipe Racks, 570 lb. (212 kg) Capacity
Head & Taillights	
2500 W Generator	

Note: Some options may increase lead time, and some option combinations may not be available.

## 500 RTS Rough Terrain Scissor Lift Advantages

Built with the customers' needs in mind, the 500 RTS scissor lift improves productivity on larger-scale applications where rough terrain, over-sized materials and close proximity to work are important. With its wider, longer deck, JLG's versatile 500 RTS Model provides:

- A 50-foot reach (15.24 m) with MegaDeck optional deck extension that gets operators closer to the work area for improved productivity and versatility and reduced chance of back injury.
- Saves time and money with an increased deck space—up to 2,500 lbs. (1,134 kg) capacity.
- An oscillating axle for a smoother ride and better traction on rough terrain.
- Faster lift and drive speeds.

### JLG Industries, Inc.

1 JLG Drive, McConnellsburg, PA 17233-9533  
Telephone 717-485-5161 Toll-free in US 877-JLG-LIFT  
Fax 717-485-6417  
www.jlg.com

Printed in USA  
FORM NO.: SS-500RTS-0702-5M  
PART NO.: 3131405  
R06021

